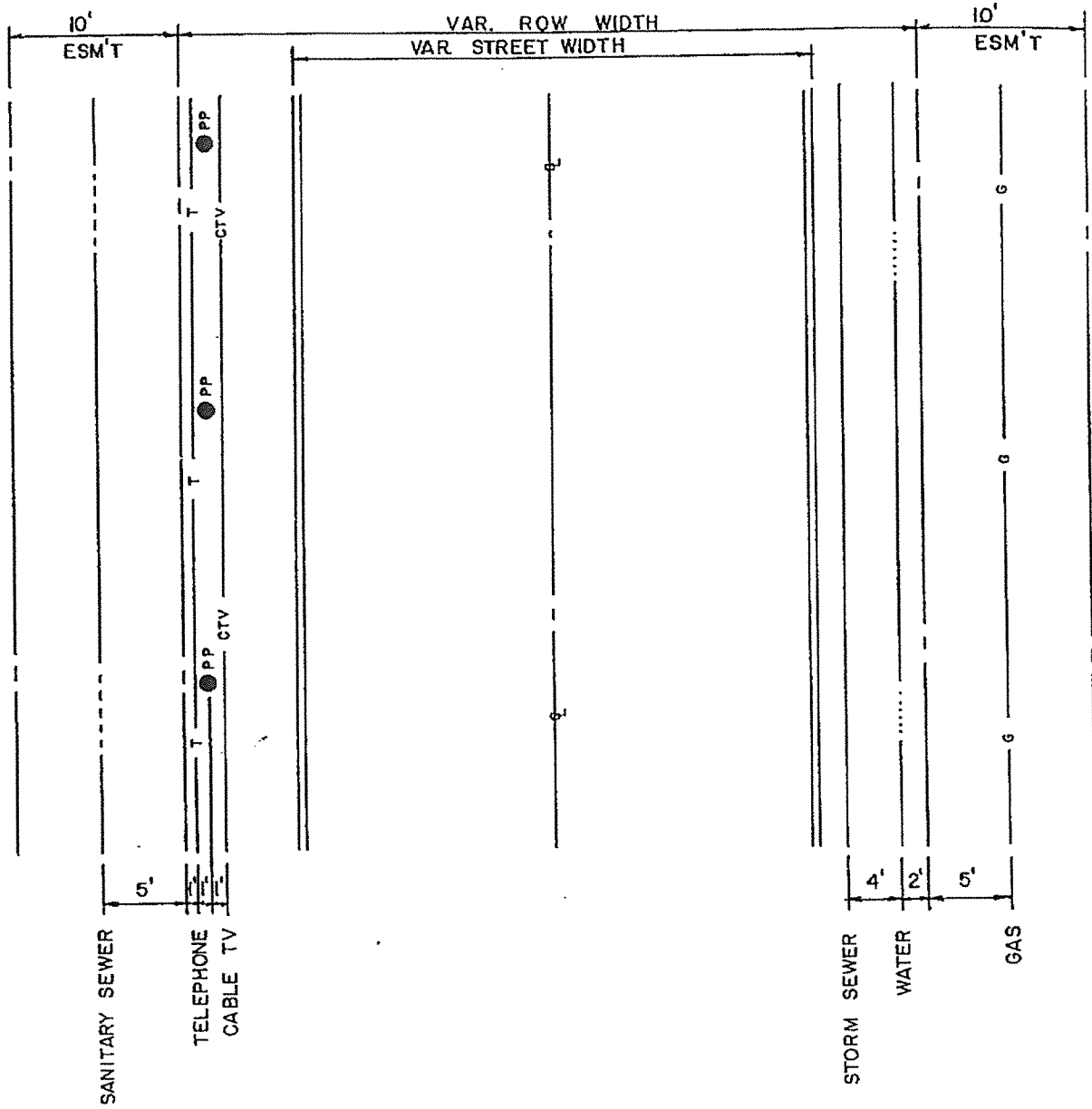


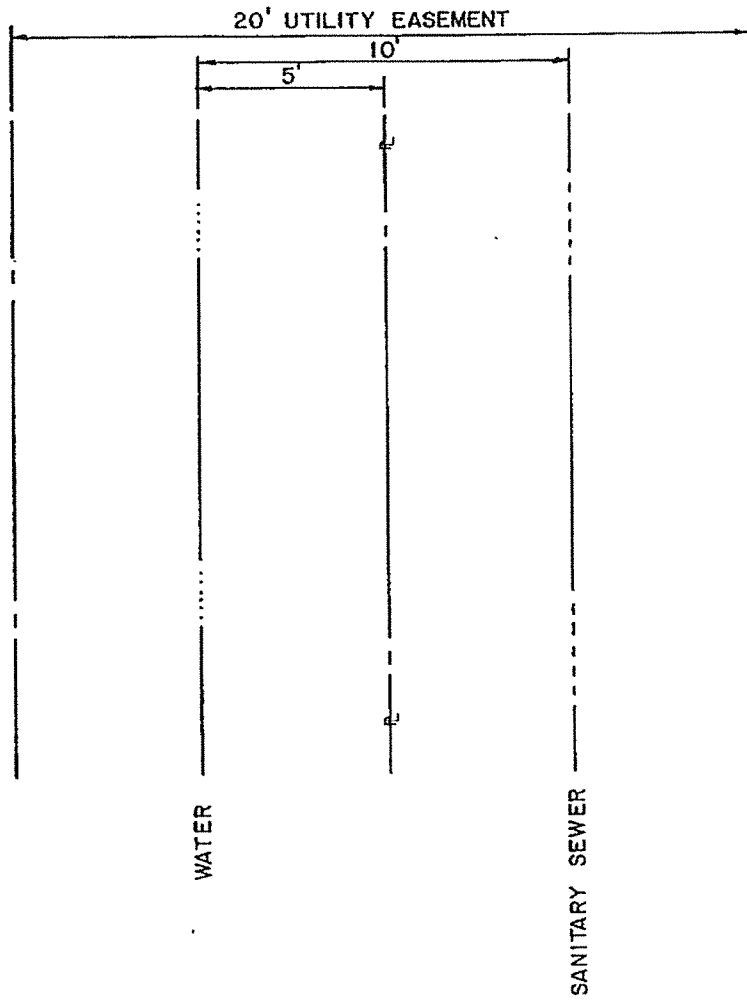
| | | |
|-------------------------------|---|-----------------------|
| Huntsville Design Criteria | UTILITY PLACEMENT IN R.O.W with ADJACENT EASEMENTS | Scale: NONE |
| Revisions | | FIGURE 7-1 |



| |
|-------------------------------|
| Huntsville Design Criteria |
| Revisions |

**UTILITY PLACEMENT IN
R.O.W. with ADJACENT EASEMENTS
(OVERHEAD)**

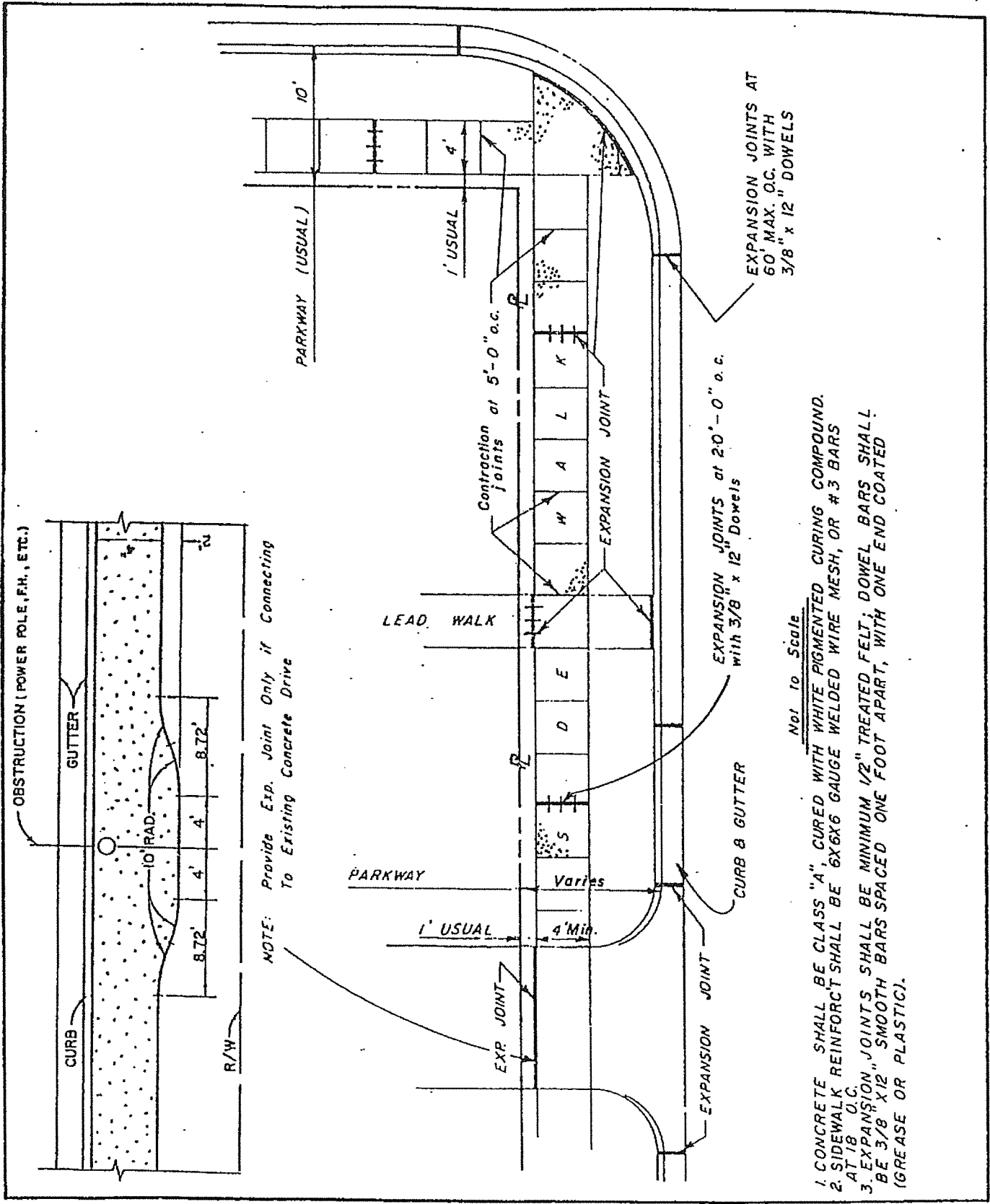
| |
|----------------|
| Scale: NONE |
| FIGURE 7-2 |



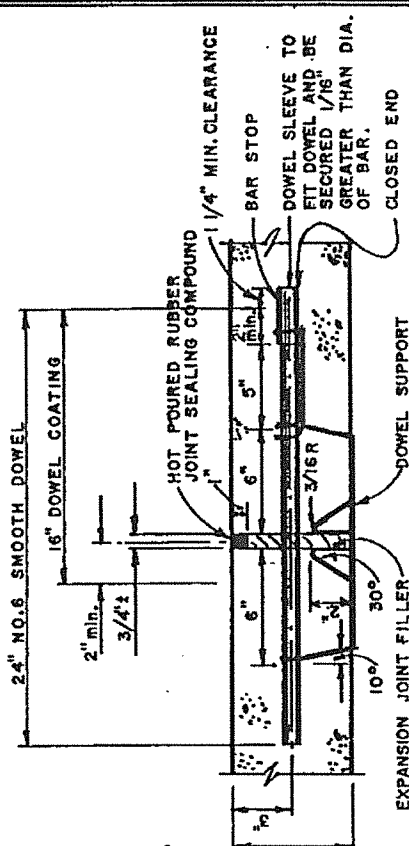
| |
|-------------------------------|
| Huntsville Design Criteria |
| Revisions |

**UTILITY PLACEMENT IN
BACKLOT EASEMENT**

| |
|-------------------|
| Scale: 1" = 5' |
| FIGURE 7-3 |

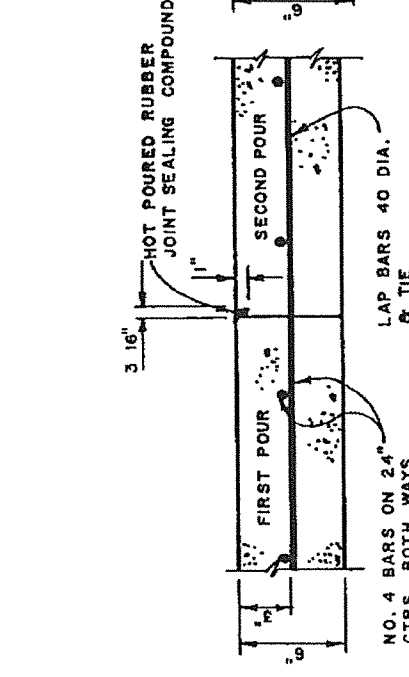


| | | |
|--|---|------------|
| <p>REVISIONS</p> <p>11-14-83 J.C.Y</p> | <p>HUNTSVILLE STANDARD DETAILS TYPICAL CONSTRUCTION LAYOUT CURB AND GUTTER, SIDEWALK AND DRIVEWAY</p> | <p>R-1</p> |
|--|---|------------|

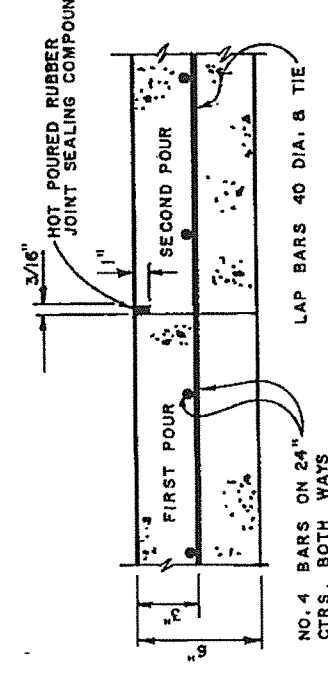


TRANSVERSE EXPANSION JOINT

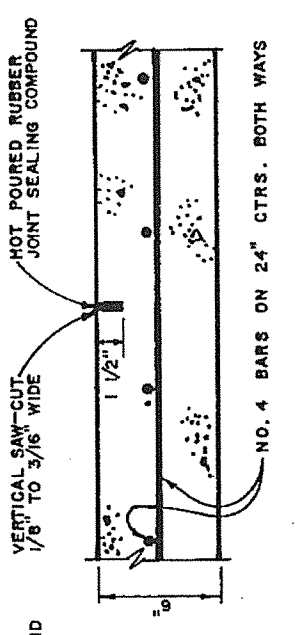
Not to Scale



TRANSVERSE CONSTRUCTION JOINT



LONGITUDINAL CONSTRUCTION JOINT



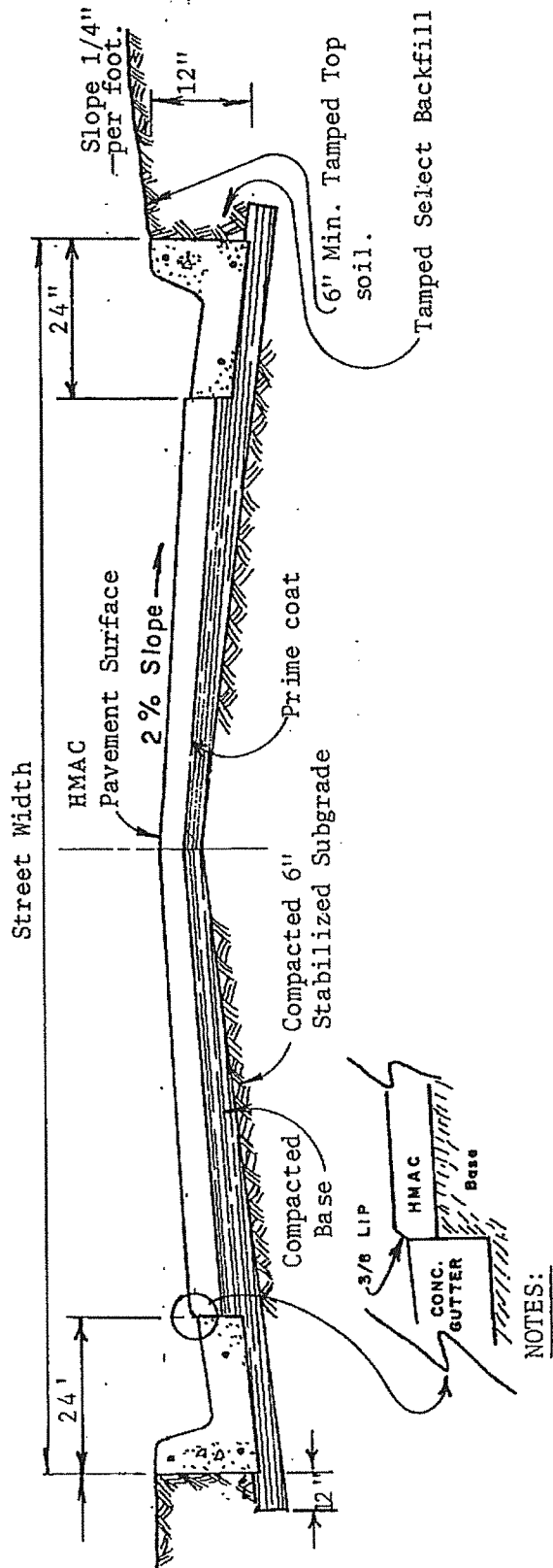
TRANSVERSE OR LONGITUDINAL SAWED DUMMY JOINT

REVISIONS

CITY OF HUNTSVILLE
STANDARD DETAILS

TYPICAL RESIDENTIAL
PAVING (CONCRETE)

R-2b

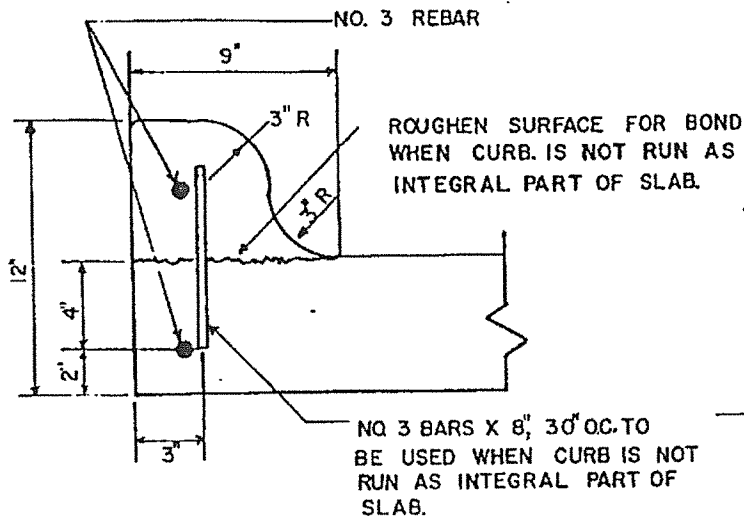


- NOTES:
1. Pavement and Base Material thickness to be accordance with the City of Huntsville Subdivision Design Standards Manual.
 2. Street width shall conform to City of Huntsville Subdivision Design Standards Manual.
 3. Expansion joint in curb and gutter to be at bridges, intersections, and other structures, and at spacing not to exceed 38' ft. All joints to be properly sealed.
 4. H. M. A. C. is Hot Mix Asphaltic Concrete. Use Type "D" per SDHPT Standard Specifications Item 340.

| |
|-----------|
| REVISIONS |
|-----------|

HUNTSVILLE
STANDARD DETAILS
TYPICAL RESIDENTIAL PAVING
HOT MIX ASPHALTIC CONCRETE

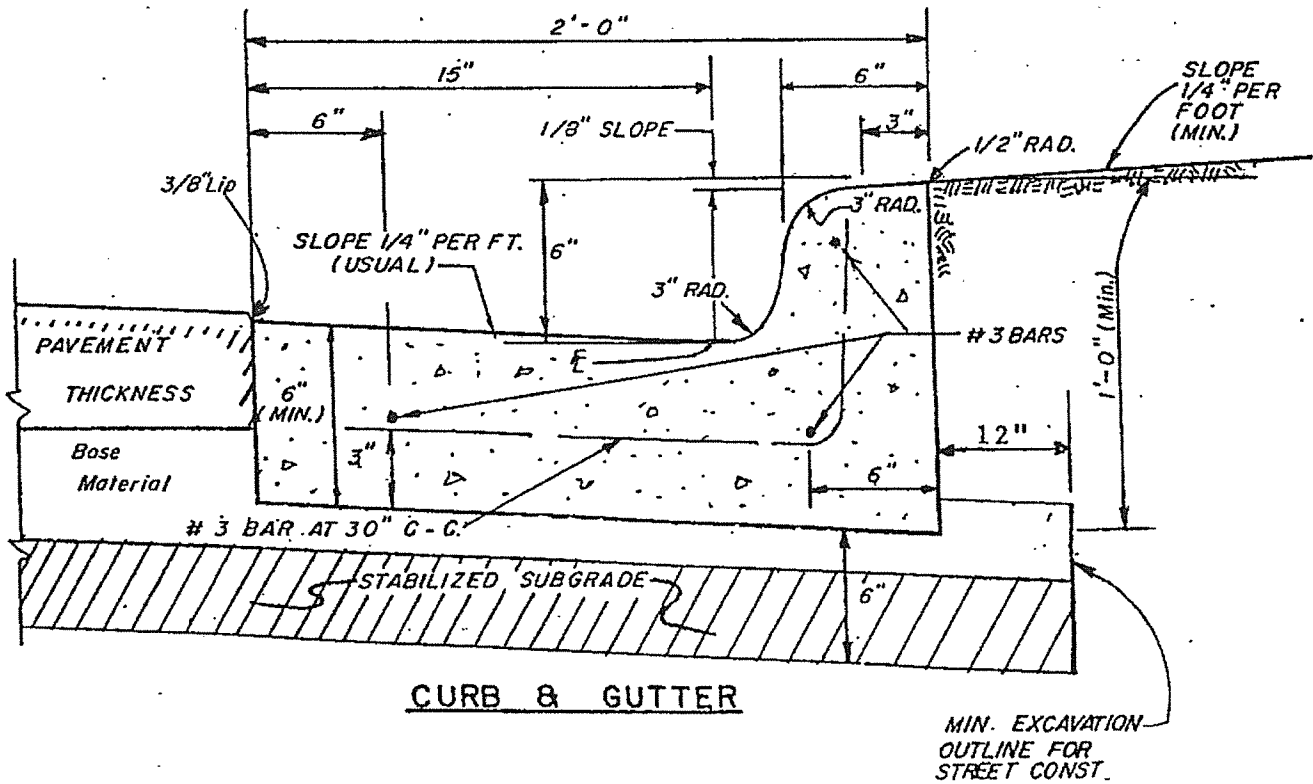
| |
|-----|
| R-3 |
|-----|



NOTES:

1. Place 1/2" expansion joint at each PC, PT, or minmun 38' O.C.
2. Use 3000 psi, Class "A" Concrete.
3. Stabilized subgrade may be 2-sack cement-stabilized sand, crushed rock or iron ore base material, as approved by the City Engineer.

* Shall be used to replace existing curb to match existing curb-only improvements.



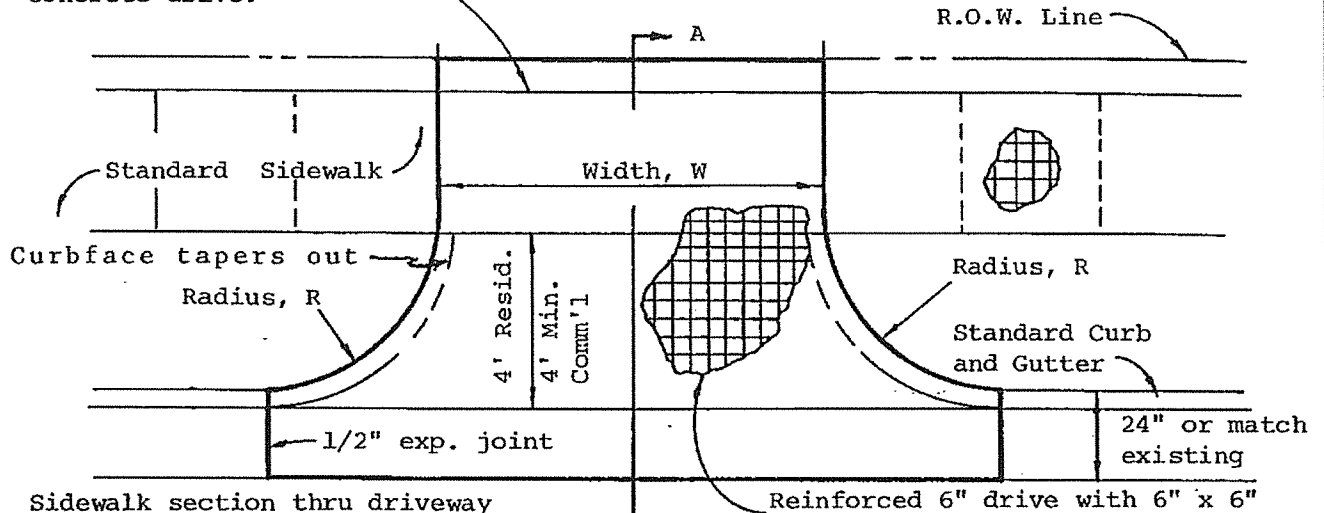
| |
|------------------------------|
| REVISIONS 11-14-83 J.C.Y. |
|------------------------------|

HUNTSVILLE
STANDARD DETAILS
**STANDARD CURB
AND GUTTER**

| |
|-----|
| R-4 |
|-----|

| Type | R ft. | W, ft. | |
|-------------|----------|--------|------|
| | | Min. | Max. |
| Residential | 5 min. | 12 | 30 |
| Commercial | 5 min. | 20 | 40 |
| One-Way | 5 min. | 20 | 40 |
| Two-Way | 10 min. | 25 | 40 |

Provide expansion joint only if connecting to existing concrete drive.

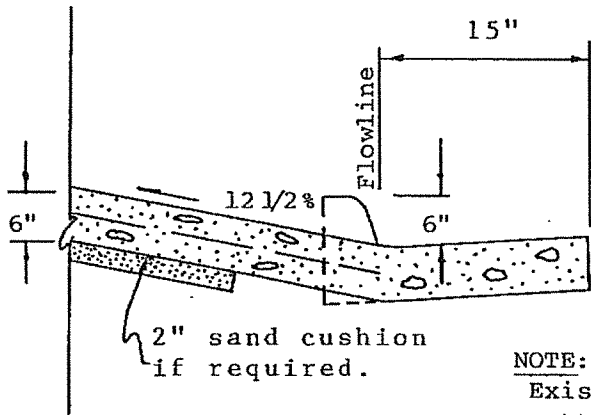


Sidewalk section thru driveway to be poured same thickness as driveway approach sloped at 1/4" per foot, existing sidewalk to be removed and replaced.

Plan View

Reinforced 6" drive with 6" x 6" No. 6 wire mesh or #3 bars at 18" C-C for residential drives or #4 bars at 12" C-C for commercial drives. Concrete to be Class A, 3000 psi.

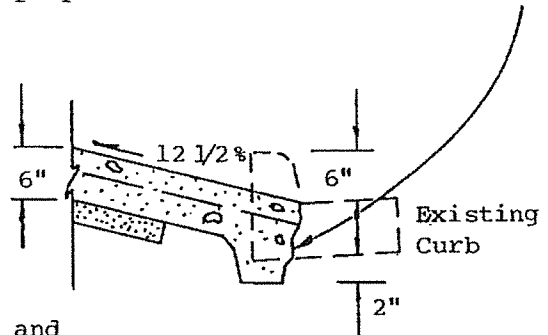
Neat break line in gutter. The surface to be rough, epoxy bonding agent applied and proper construction methods followed.



SECTION A-A
New Curb
And Gutter

NOTE:

- Existing curb and gutter must be sawcut at following locations:
1. Along gutter flowline
 2. One (1) foot beyond drive approach radius point for removals.



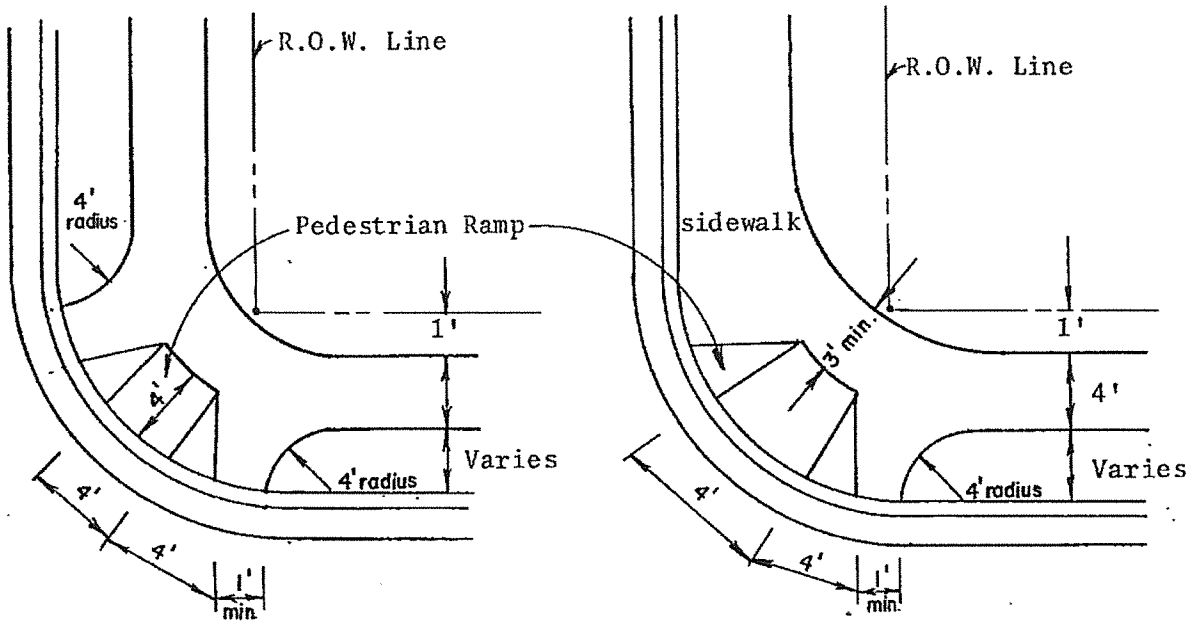
SECTION A-A
Existing Curb
And Gutter

REVISIONS

HUNTSVILLE
STANDARD DETAILS
DRIVEWAYS

R-5

SIDEWALK AND PEDESTRIAN RAMP DETAILS



DETAIL A

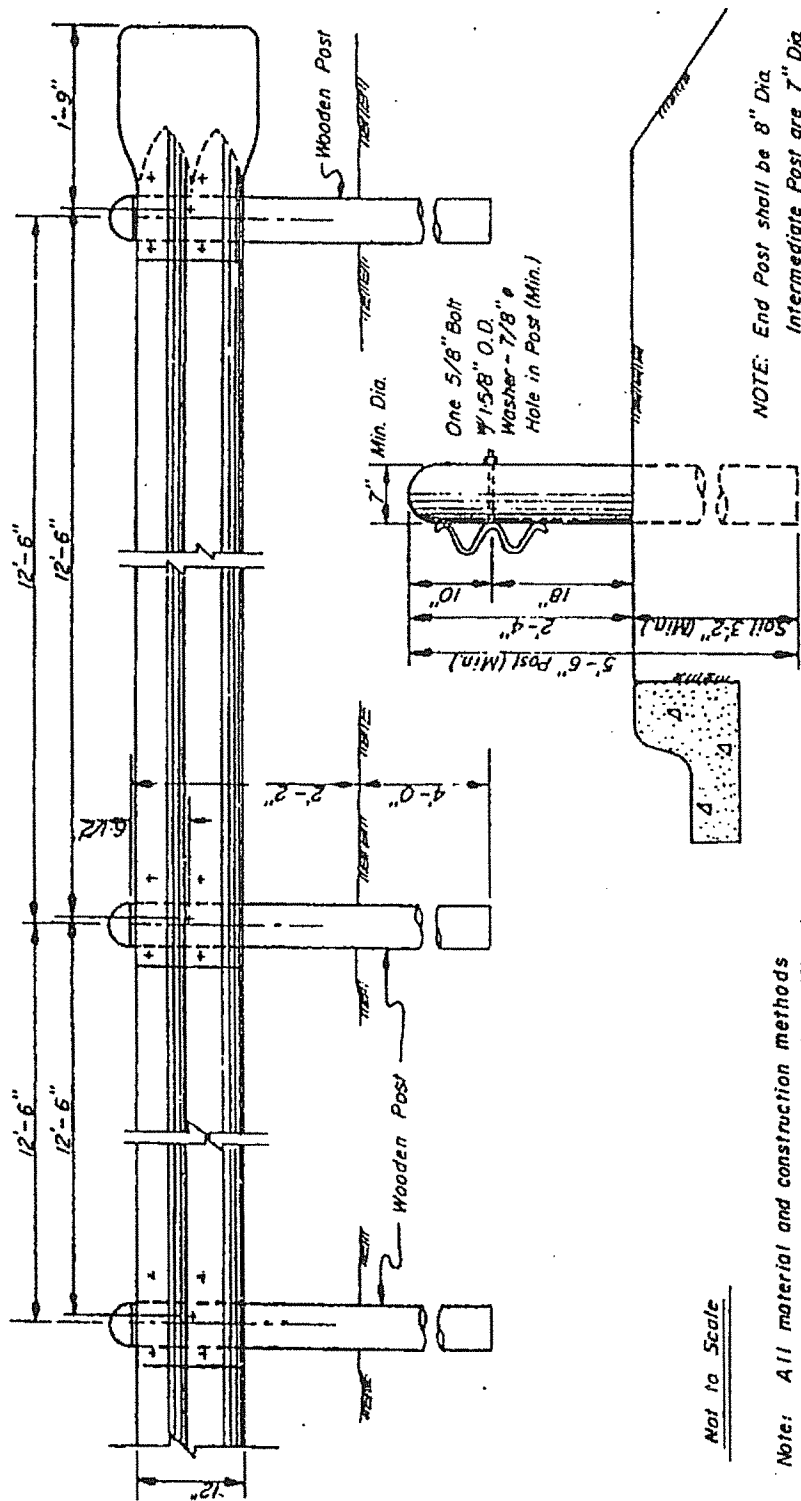
Two intersecting sidewalks
are split from curb.

DETAIL B

One intersecting sidewalk
is split from curb.

- NOTES:
1. For sidewalk details see Standard Drawing.
 2. Back of sidewalk radius to be reduced in order to avoid encroachment on private property in those instances where the property lines are extended.
 3. Maximum slope of ramp shall be 12.5%.
 4. Ramps shall not conflict with curb inlets.
 5. Ramps shall be rough broom finished transverse to slope.

| | | |
|-----------|---|-----|
| REVISIONS | HUNTSVILLE STANDARD DETAILS | |
| | SIDEWALK AND PEDESTRIAN RAMP TREATMENT | R-6 |



POST SECTION

Not to Scale

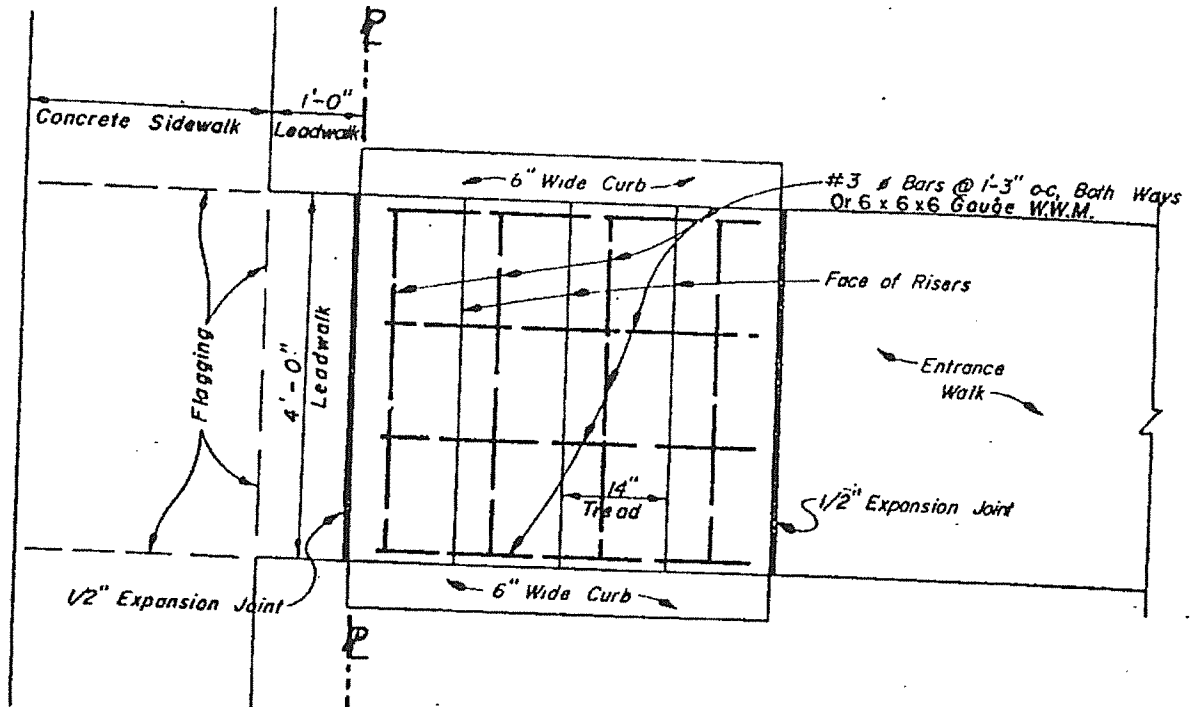
Note: All material and construction methods shall conform to the standard specifications of the SDHPT, latest edition.

REVISIONS

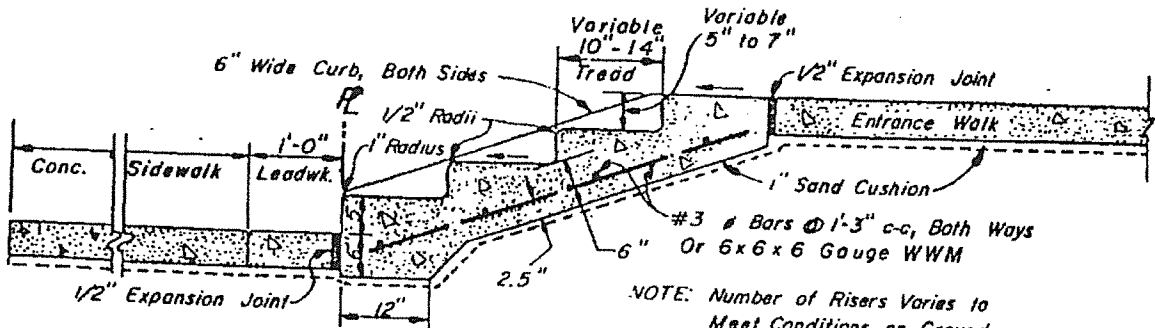
HUNTSVILLE
STANDARD DETAILS

STEEL GUARD RAIL

R-7



PLAN VIEW

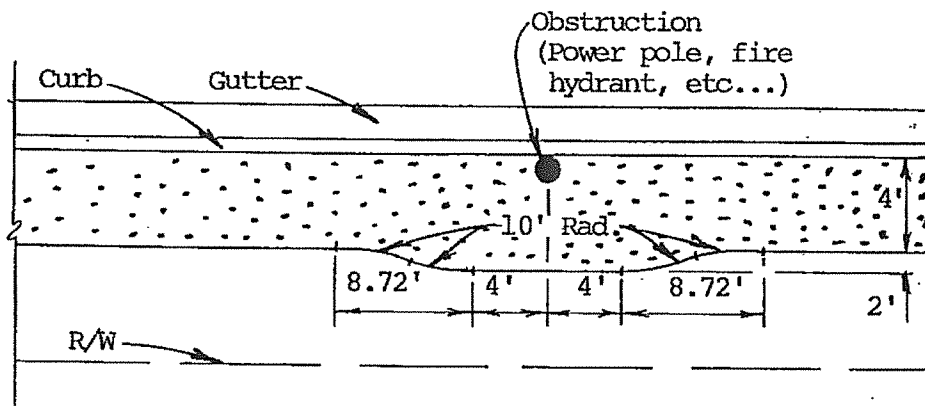


NOTE: Number of Risers Varies to Meet Conditions on Ground.
Slope Tread 1/8" per ft.

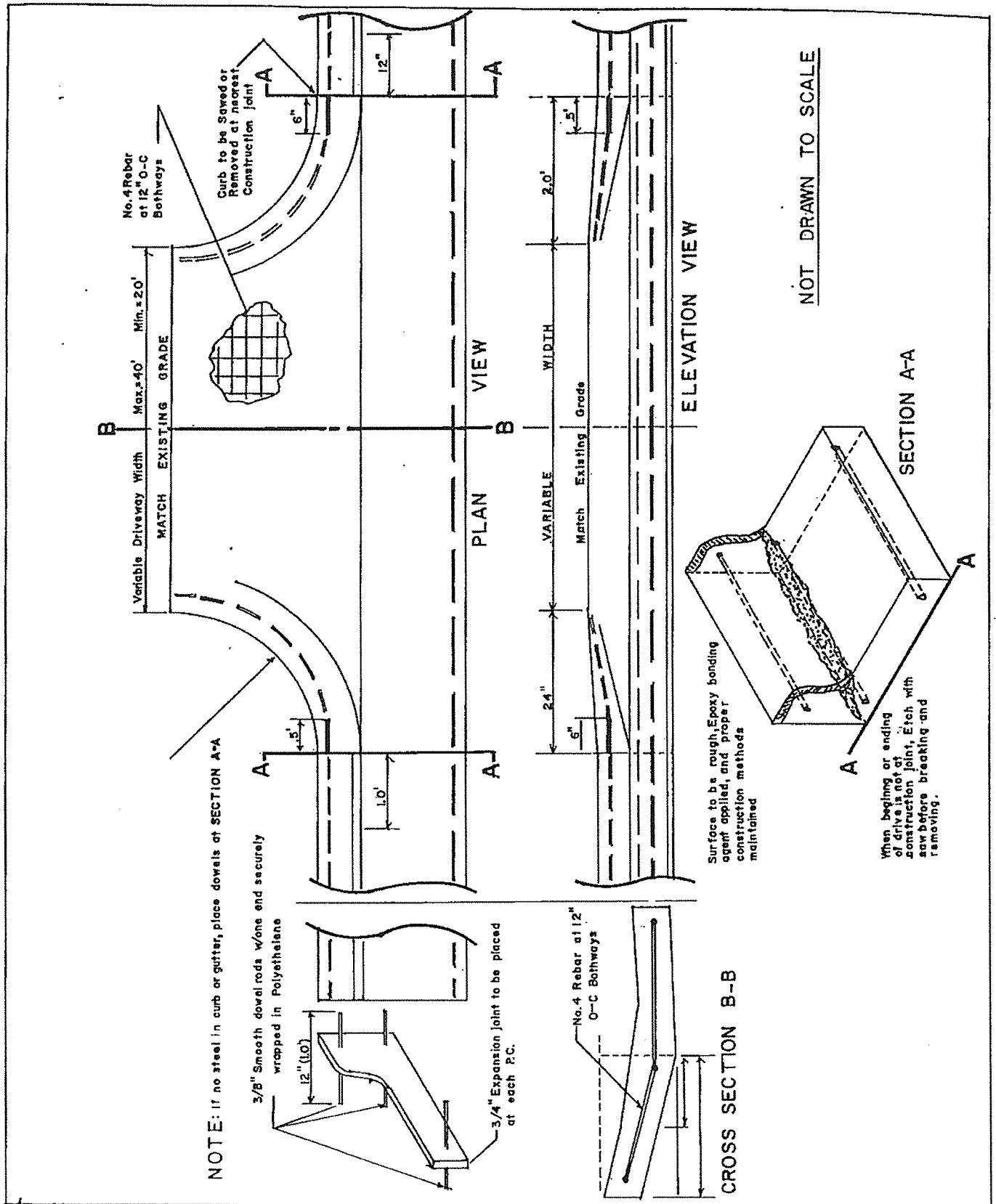
SECTION VIEW

Not to Scale

| | | |
|-----------|--------------------------------|-----|
| REVISIONS | HUNTSVILLE STANDARD DETAILS | |
| | CONCRETE STEPS | R-8 |



| | | |
|-----------|--|-----|
| REVISIONS | HUNTSVILLE STANDARD DETAILS TYPICAL SIDEWALK OBSTRUCTION TRANSITION | |
| | | R-9 |



| |
|-----------|
| REVISIONS |
|-----------|

HUNTSVILLE
STANDARD DETAILS
STANDARD COMMERCIAL
DRIVEWAY DETAIL

| |
|----------|
| SHEET of |
| R-10 |